

SHOSHONE ELEMENTARY FINANCIAL STATEMENT

Farmer's National Bank/January 2019

	Beginning			Ending
Account Name	Balance	Income	Expenses	Balance
General Fund	\$1,847.52	\$0.00	\$28.72	\$1,818.80
Enrichments	\$121.84	\$0.00	\$83.11	\$38.73
StoryLine	\$3.92	\$0.00	\$0.00	\$3.92
World's Finest Chocolates	\$1,135.43	\$0.00	\$577.90	\$557.53
	\$3,108.71	\$0.00	\$689.73	\$2,418.98

January Debits/Credits

	Amount	Outstanding	Cleared
1/15 Ck. 1152 Shoshone School District/Bus Enrichments	\$26.22		X
1/17 Ck. 1153 Walmart/Snowman Bottle Enrichment Supplies	\$56.89		X
1/22 Debit Sawtooth Foodtown/Ice Cream Treats/Best Attendance	\$28.72		X
1/30 Debit Oriental Trading Company/WFC Prizes	\$577.90		X
			X

Outstanding November Debits/Credits

	Amount	Outstanding	Cleared
11/1 Ck. # 1145 Yesenia Hurtado/Enrichment Refund	\$16.00	X	

Outstanding March Debits/Checks

3/21 Ck.#1123 Paula Huyser/Reimbursed for Enrichment Supplies	\$34.54	X	
---	---------	---	--

January Deposit

No January Deposits

Balanced with Statement 2/5/19

Wendy Clark
Emily Nelson

February

2019

School Calendar Clarification

Our current school calendar indicates that the last day of school is Friday, May 31, with a 1:00 p.m. dismissal. This has changed. Our last day of school is May 30, 1:00 p.m. dismissal.

P.T.O. Meeting

Our next Parent Teacher Organization meeting will be Tuesday, February 5, 4:15 p.m. We will discuss future activities and fundraisers. We hope you can attend!

Kindergarten Registration 2019-2020

Shoshone School District Kindergarten Registration for the 2019-2020 school year will be held in our kindergarten classrooms on Thursday, April 25, 5:30-8:00 p.m. Please bring your child, their official birth certificate, and current or completed immunization record. Registration and screening will take approximately 45 minutes.

Fourth Grade NAEP Assessment

On Thursday, February 7, fourth grade students will take the National Assessment of Educational Process (NAEP). This assessment will take approximately 60 minutes and will test student achievement in reading, math, science and writing.

Pre School Child Find

Shoshone School District will hold a pre-school eligibility screening on Thursday, April 25, 5:30-8:00 p.m. This service is available to all resident, 3-5 year old children. To be eligible for testing, your child must turn 3 before May 31, 2019. If you have developmental concerns about your preschool child please call our elementary office at 886-2381 ext. 138 so we can schedule a screening appointment.

President's Day



In celebration of President's Day there will be No School on Monday, February 18.

Valentine's Party

Classroom parties will begin at approximately 3:15-3:30 P.M. on Thursday, February 14. If you are planning to send your child a little something on Valentine's Day please keep in mind that gifts may be delivered at the end of the school day.

Extended School Day Ends



At 4:00 p.m. on Thursday, March 21, 2019 our extended school day ends for all grades. When we return from spring break on Monday, April 1, school will dismiss at 3:35 p.m. instead of 4:00 p.m. Buses home will run approximately 20 minutes earlier than they do now.



March 25-28

Shoshone Education Association Sucker/Bake Sale

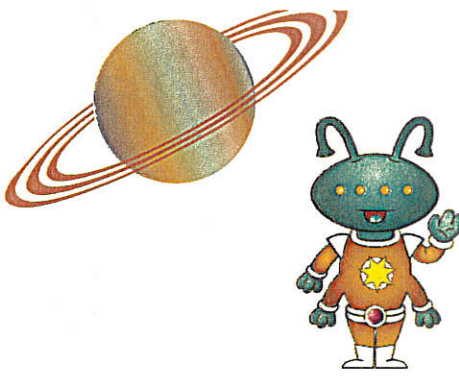
On Thursday, February 28, Shoshone Education Association will celebrate Dr. Seuss Day with a sucker/bake sale. Students will have the opportunity to purchase yummy treats during the school day. Treats will sell for \$0.50 to \$1.00. All proceeds will benefit the "Idaho Children's Fund" which provides glasses, school supplies, clothing, and health services to Idaho Public School Children.

Habit #5

**SEEK FIRST TO UNDERSTAND
THEN TO BE UNDERSTOOD**

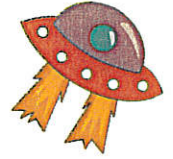
Listen before you speak

- I listen to others without interrupting.
- I raise my hand when I want to speak and I wait to be called on.
- I don't blurt out.
- I try to understand other people's views and feelings, even if they are different from my own.



MRS. NELSEN'S DESIGN CHALLENGE

IT'S OUT OF THIS WORLD!



February 4, 2019

Last October we held a potato decorating contest in celebration of Idaho's Healthy Harvest and National School Lunch Week. Our students enjoyed this contest so much that we have decided to create another challenge to encourage our students to use their creative skills to engineer a unique design using the materials provided. We are calling this contest Mrs. Nelsen's Design Challenge.

This is how it works:

1. The student can either make an Alien or a Planet the alien lives on using a portion or all the materials provided. It's okay to glue, staple, tape, tear, fold, roll or bend materials. For extra judging points students are encouraged to write a short story about their alien or planet creation.
2. Along with the materials provided students may include up to three extra items in their design.
3. Design must be presented on the paper plate provided.
4. Design must be the student's creation. Parents are encouraged to supervise but asked to let their child be in charge. Parents, please hold yourself back from influencing their creative process.
5. Designs can be entered at the elementary office starting February 5, but not later than 8:15 a.m. on February 13. Judging will take place after 8:15 a.m. on February 13. Results will be announced at 3:30 p.m. on the same day.
6. A 1st and 2nd place prize will be awarded in each grade level.

I am so excited to see all the artistic and imaginative alien or planet designs our students enter in this challenge. Each outcome will be so different. Feel free to stop by and visit their master pieces displayed in our elementary hallway any time after February 11. Please check in at the office so we know you are in the building.

With appreciation,

Mrs. Nelsen
Principal

